

Manual & installation PMT MIDI IO Controller & Remote application



Content

Basic system operation	2
Connecting Windows 7	3
Connecting Windows 8 and newer versions.....	4
Connecting mixing desk	5
Testing midi codes	6
Windows software additional launch options	8
Activating optional license	9

Note: This hardware may only be used in a dry room

Basic system operation

NOTE: the 4-port version only works on a DX 2000 mixing console!

The system translates a signal of the DX2000 to one of the four inputs into a MIDI command. This MIDI message is sent to the computer via the USB connection.

Then it can be assigned to a software package that supports MIDI. The used software package determines which options are ultimately available.

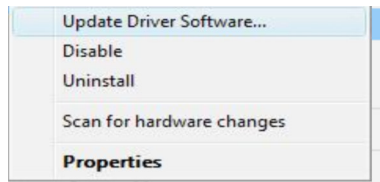
The inputs works completely independently of each other (non blocking) and can therefore also be used simultaneously.

Connect computer Windows 7

If you have Windows 8 or newer, skip this page!

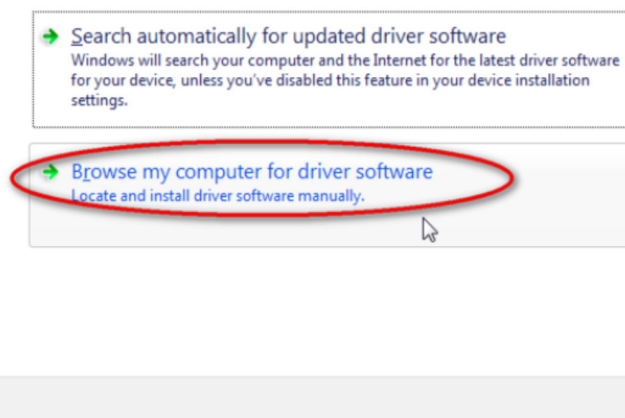
Windows 7 users need to install a driver. Download the drivers from https://pmteurope.com/download/MIDI_IO_unit_drivers.zip

Unzip it and right-click on the unknown device and choose “update driver”.



Then choose “Update Driver Software”

How do you want to search for driver software?



Click on “browse my computer” and then choose the just unzipped folder, windows will install the driver itself.

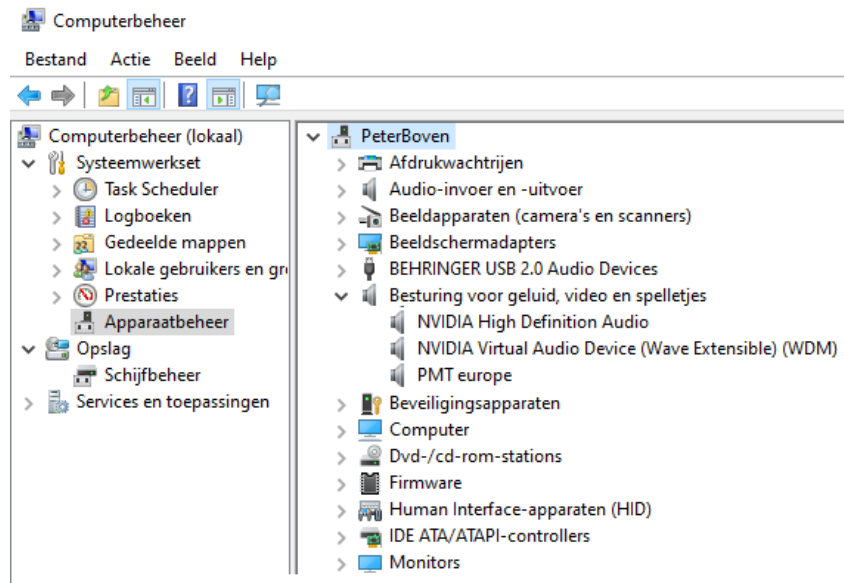
Connect computer from Windows 8 on

Computer

Connect the box to an USB port on your computer. No external adapter is required, the device is powered by the computer.

From Windows 8 on no drivers are needed and Windows will recognize it itself.

Windows should have installed it itself and you can find it under device manager.



Connect mixing desk

The connections to the mixing console are connected via the cinch / tulip plugs (male).

If you have not ordered a cable set, you can make it yourself. It is important to connect the plus and minus correctly.

The center of the tulip connection is the plus. This must be connected to the tip of the mono jack plug (6.3mm). The other goes on the large part (sleeve) of the jack plug.



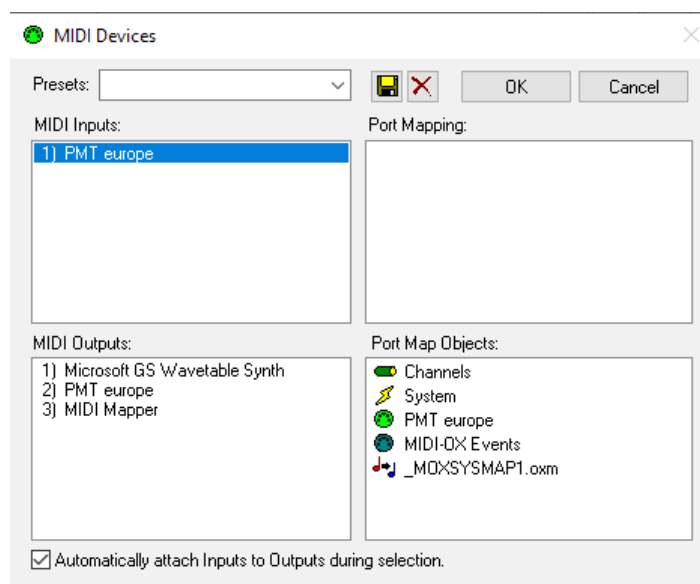
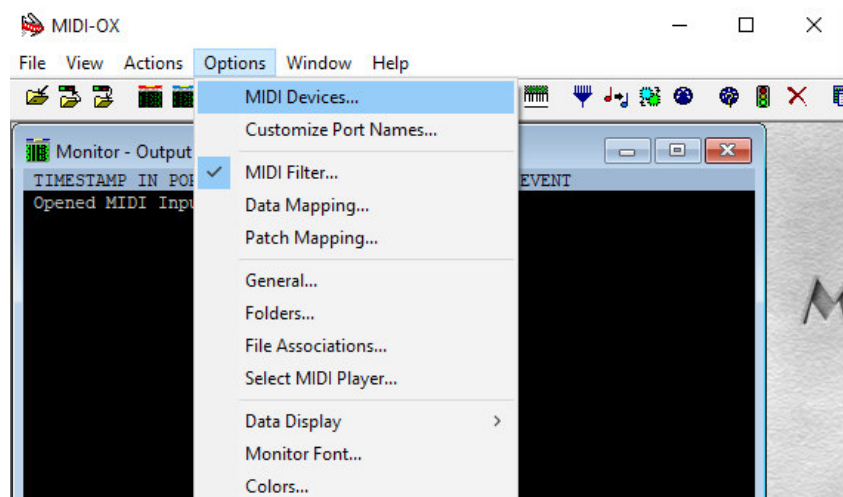
The LED on the hardware will light up briefly if an input is active.

Then it's time to do a test, make sure your cables are connected between the mixing console and the MIDI unit and press a start button on your mixing console. If all goes well, the LED on the MIDI unit will light up. Well then it works so far.

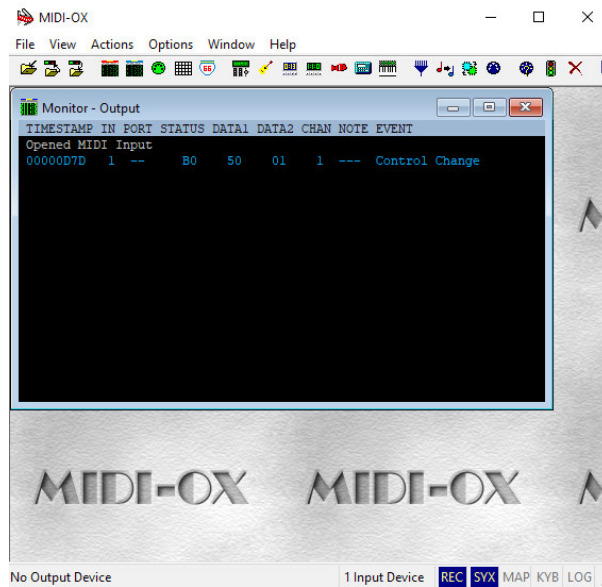
Test MIDI codes

It is wise to check whether the midi codes arrive on your computer and if the MIDI unit works. We do that with software that reads Midi commands. The program used is called MIDI-OX and can be downloaded here <http://www.midiox.com/zip/midioxse.exe>

After installation, start the software and choose the MIDI device. Click on “options, Midi devices” and click on “PMT europe” (it should turn blue).



Then it's time to test, make an input active, preferably via a shorted RCA plug. You should now see a midi code appear, this is the start code.



Memory error

In some cases it can happen that MIXI-OX gives a Memory error.

This error occurs when 2 software programs are trying to access the MIDI unit at the same time. Make sure that only MIXI-OX is active!

Windows software

(unit hardware must have firmware 2.0 or higher)

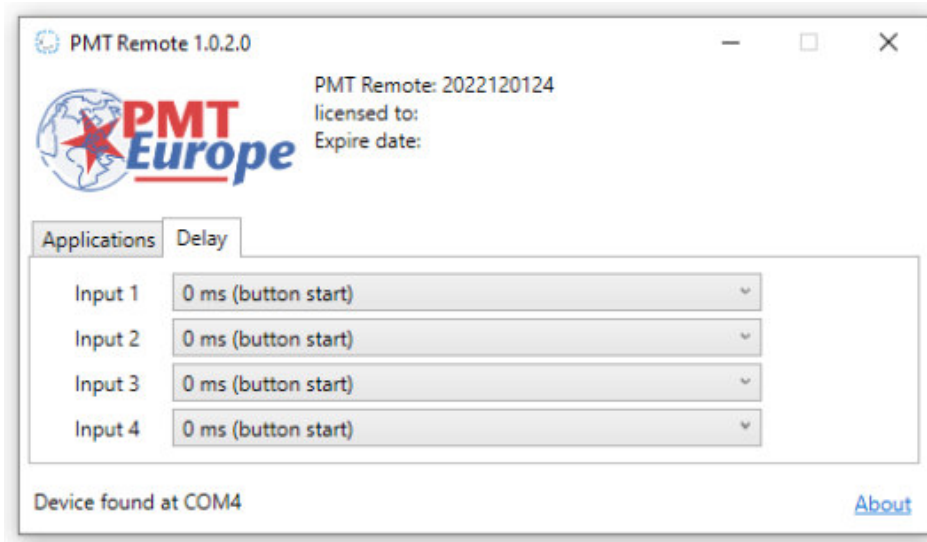
Delay

All inputs have an adjustable delay independently of each other. This is adjustable in steps from 0 to 250ms.

This allows you to delay the inputs on the channels where you use fader start.

Thanks to this function, you prevent the music from sliding in. After all, the music is always sharp in playback software. In addition, not everyone is equally fast in opening the fader, so it can be useful to set the delay longer or shorter.

The settings are stored in the hardware, so the Windows software does not have to be active on the computer. No license is required to use these settings.



The software can be downloaded from <https://broadcast-parts.eu>

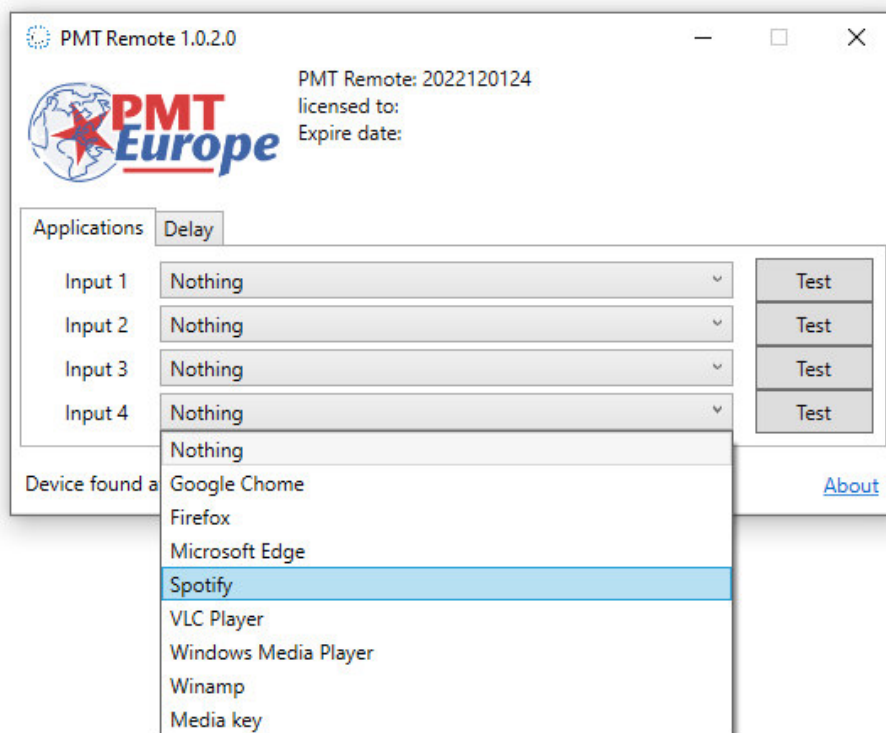
*Windows software
(unit hardware must have firmware 2.0 or higher)*

Additional starting options

Thanks to the software, it is possible to send a start command on a Windows computer to a browser: Google Chrome, Firefox, Edge, Spotify, but also to: VLC player, Windows media player or Winamp.

As a result, it is now possible to start something in your browser. Think of something from Youtube that is ready in Google Chrome. Or something in winamp or vlc player. You can set this option per port, so you can set up one channel of your mixing console for this.

A big advantage is that the browser and/or player does not have to be running in the foreground to start, unlike keyboard emulators,



The investment that has been made in these options has been large, this is why a license is required for this extra functionality for a small amount per year. This enables us to continue to develop. A two-month test license is included free of charge.

Activate license

A license is required for the additional launch options. You can order this license at <https://broadcast-parts.eu>.

The license code will be sent by email as a .txt file. Place this file in the folder where the software is installed. By default this is "C:\PMT Europe\PMT Controller"

After you have copied the file to this folder, you need to restart the software.

Note: to use the Windows software you must have midi hardware firmware 2.0 or higher. This is stated on the bottom of your box.

The software can be downloaded from <https://broadcast-parts.eu>