

# Installation in RadioDJ PMT MIDI-IO Controller



*Note: This hardware may only be used in a dry room*

We assume that you have followed the basic installation manual and that the midi device does its job properly.

The MIDI commands are sent to the computer via the USB cable. RadioDJ can use these codes to start or stop things like the main player and the 3 aux players.

### Moving plugins

By default, RadioDJ's MIDI drivers are in the disabled plugins folder, we will first have to move them to the plugins folder.

Make sure that RadioDJ is not running.

Go to the directory where RadioDJ is located. This is usually on c:\RadioDJ

Album-Art	26-6-2015 10:31	Bestandsmap
bass_plugins	1-4-2020 12:28	Bestandsmap
Disabled Plugins	1-4-2020 12:29	Bestandsmap
Docs	1-4-2020 12:28	Bestandsmap
Languages	6-1-2019 15:12	Bestandsmap
Logs	24-6-2021 20:28	Bestandsmap
Plugins	11-5-2021 12:34	Bestandsmap
reports	6-1-2019 15:12	Bestandsmap

There are 2 directories, the “Disabled Plugins” and “Plugins”. Open the “Disabled Plugins” folder and then to the “Plugin MidiController” folder

RadioDJ > Disabled Plugins > Plugin MidiController

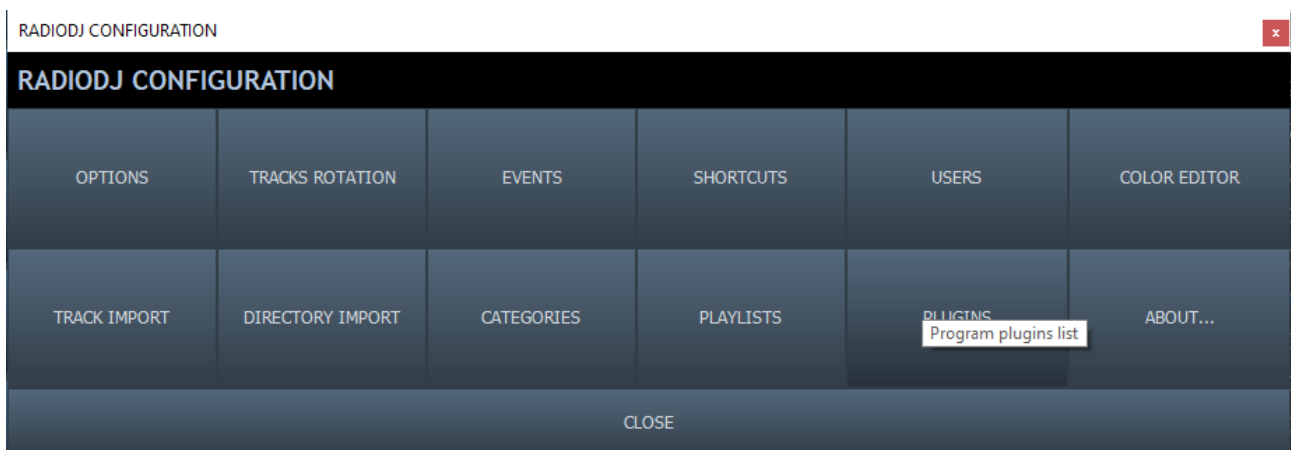
Naam	Gewijzigd op	Type	Grootte
Plugin_MidiController.dll	25-7-2018 10:54	Toepassingsuitbrei...	51 kB
Plugin_MidiController.xml	22-10-2013 22:19	XML-document	1 kB
Plugin_MidiController_Keys.xml	12-6-2014 11:08	XML-document	5 kB
ReadMe.txt	2-11-2013 16:42	TXT-bestand	1 kB

Move the top 3 files to the plugins folder.

> Plugins > v ↕

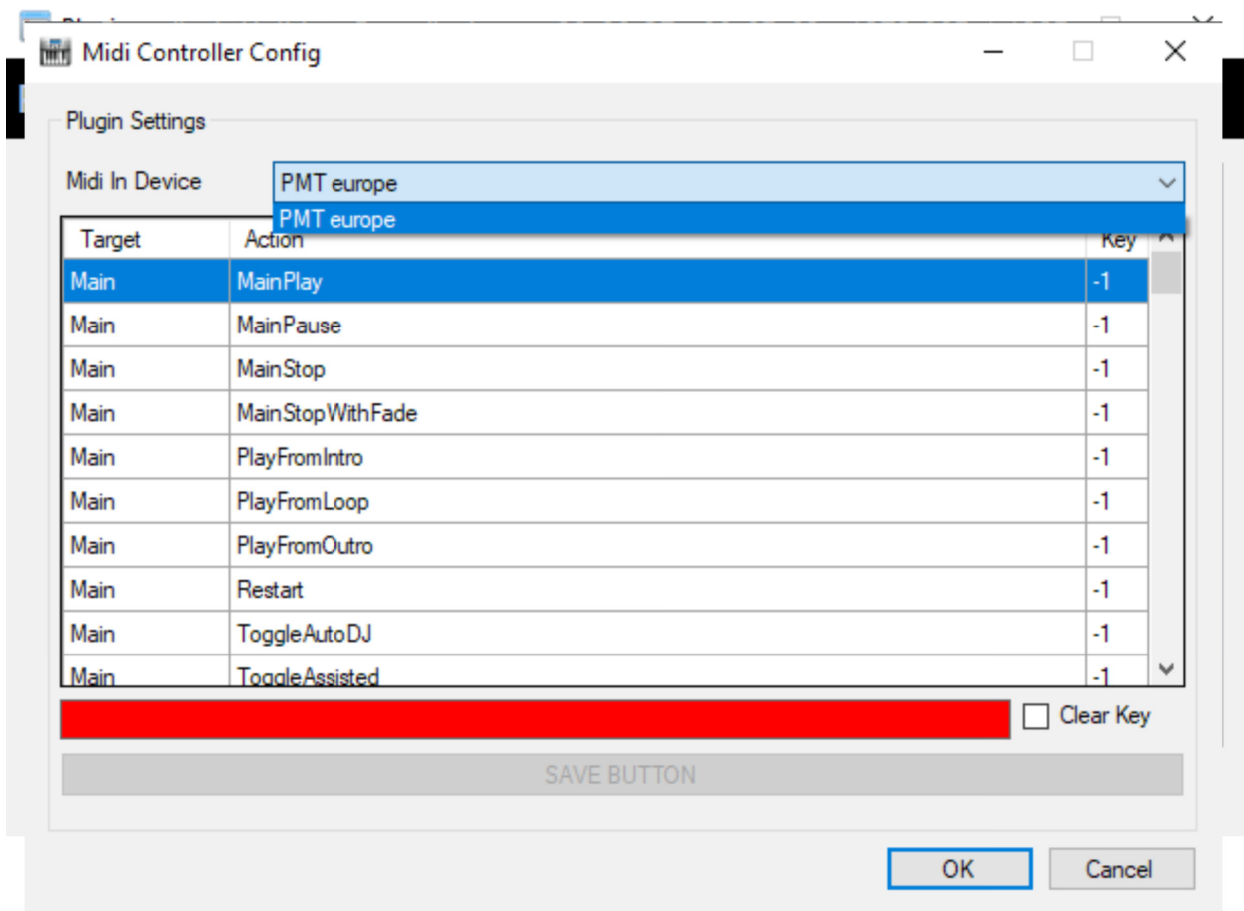
Naam	Gewijzigd op	Type	Grootte
Encoders	24-1-2020 15:49	Bestandsmap	
Plugin_AuxPlayers.dll	25-7-2018 10:54	Toepassingsuitbrei...	103 kB
Plugin_AuxPlayers.xml	15-4-2016 23:40	XML-document	1 kB
Plugin_Carts.dll	25-7-2018 10:54	Toepassingsuitbrei...	214 kB
Plugin_Carts.xml	24-7-2018 18:23	XML-document	1 kB
Plugin_FolderSync.dll	25-7-2018 10:54	Toepassingsuitbrei...	152 kB
Plugin_FolderSyncList.xml	18-6-2018 20:44	XML-document	1 kB
Plugin_History.dll	25-7-2018 10:54	Toepassingsuitbrei...	84 kB
Plugin_History.xml	2-2-2018 14:23	XML-document	1 kB
Plugin_MidiController.dll	25-7-2018 10:54	Toepassingsuitbrei...	51 kB
Plugin_MidiController.xml	22-10-2013 22:19	XML-document	1 kB
Plugin_MidiController_Keys.xml	12-6-2014 11:08	XML-document	5 kB

Now start RadioDJ and click on the wrench in the bottom right corner in version 2. If you are running version 1, click on the “options” button.



Click the plugins button

Select the “Midi controller plugin” and click on “settings”



If all goes well you can select a “midi device”, choose PMT europe.

Double click on the function you want to use. Your cursor will now flash in the red bar, now press the desired button on your mixing console and keep it pressed. If all is well, a number will now appear in the red bar and then click on “save button”. Now you can release the button. Repeat this step with the other functions you want to link.

Note: Depending on the version of the box you have, a stop command can also be sent (only for the version with 6 or more inputs). When you release the button, a different number will appear than when you pressed it. With this you could also send a stop command for example if you use fader start.